

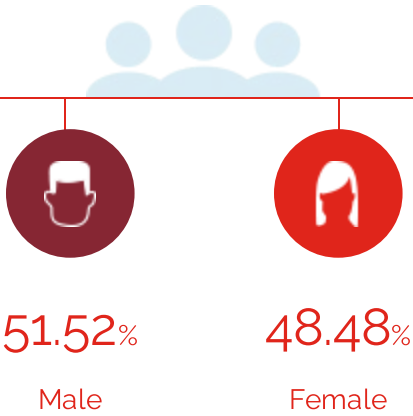
Ohio

People

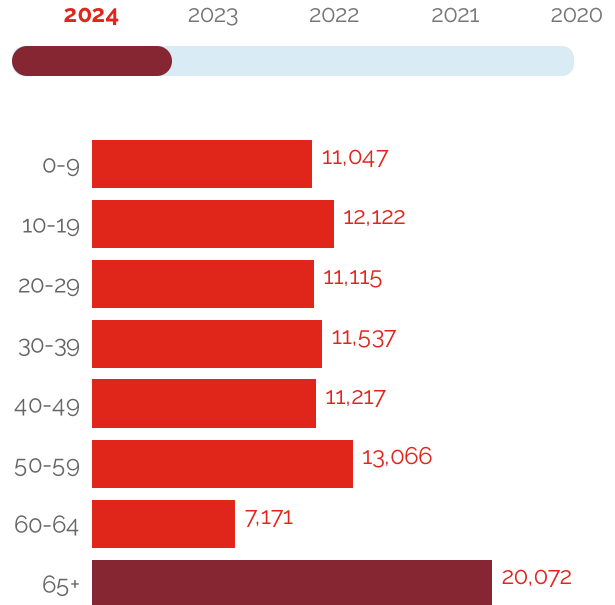
The total population of Ashtabula County is 97,347. The median age is 41.53

97,347

Total Population



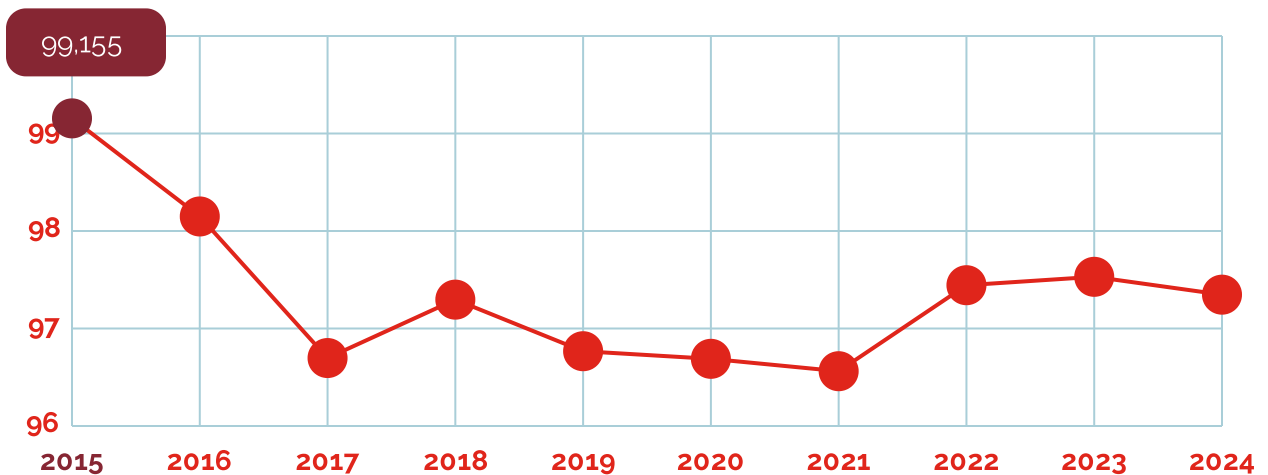
Age Distribution



Median Age

42

Population Growth (in thousands)



Data Source: Applied Geographic Solutions and FT Locations 2024, TaxFoundation.Org 2021 and FT Locations research.

Educational Attainment

25.16% of the population in Ashtabula County have an associate's degree or higher. 87.18% have a high school degree or higher.



< Grade 9

4.3%



Grade 9-12

8.51%



High School

42.26%



Some College

19.76%



Assoc Degree

8.98%



Bach Degree

10.49%



Grad Degree

5.69%



offer associate's Degree or Certificate



offer Bachelor's Degree or Higher

Labor Force

Ashtabula County has a labor force of 45,515 people, with an unemployment rate of 5.6%.

45,515

Labor Force

5.6%

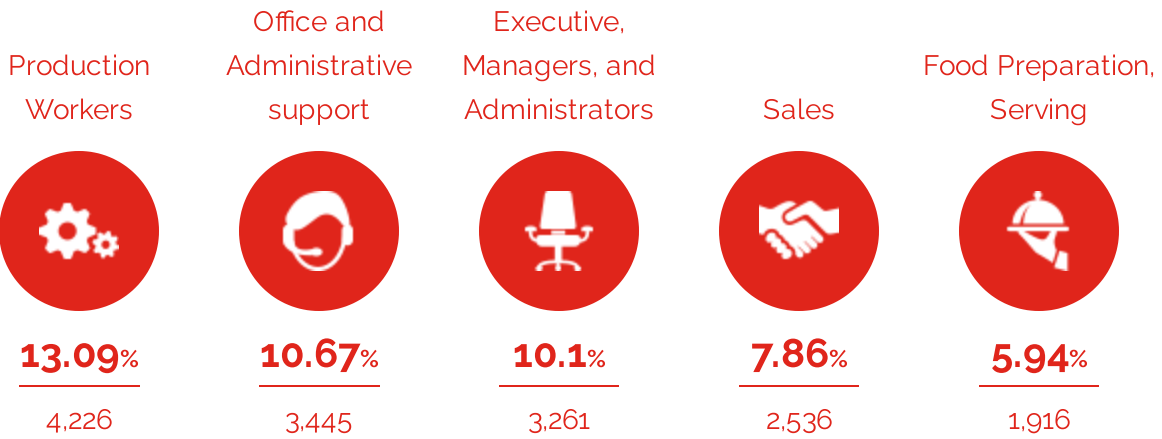
Unemployment Rate

▲ 1.8%

Unemployment Rate
Change (1 year)

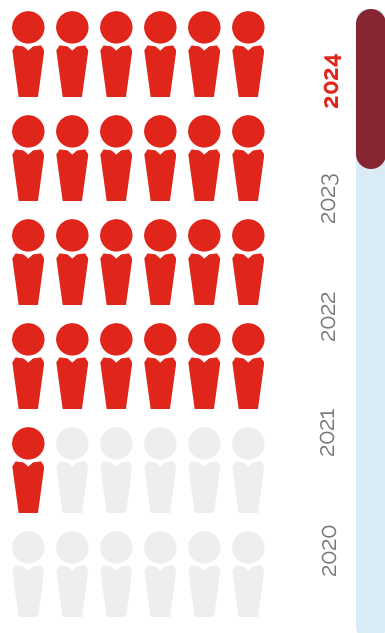
Talent

What are the largest job counts by occupation?



Total Employees

32,275



The work distribution of total employees in Ashtabula County is:



Total Establishments

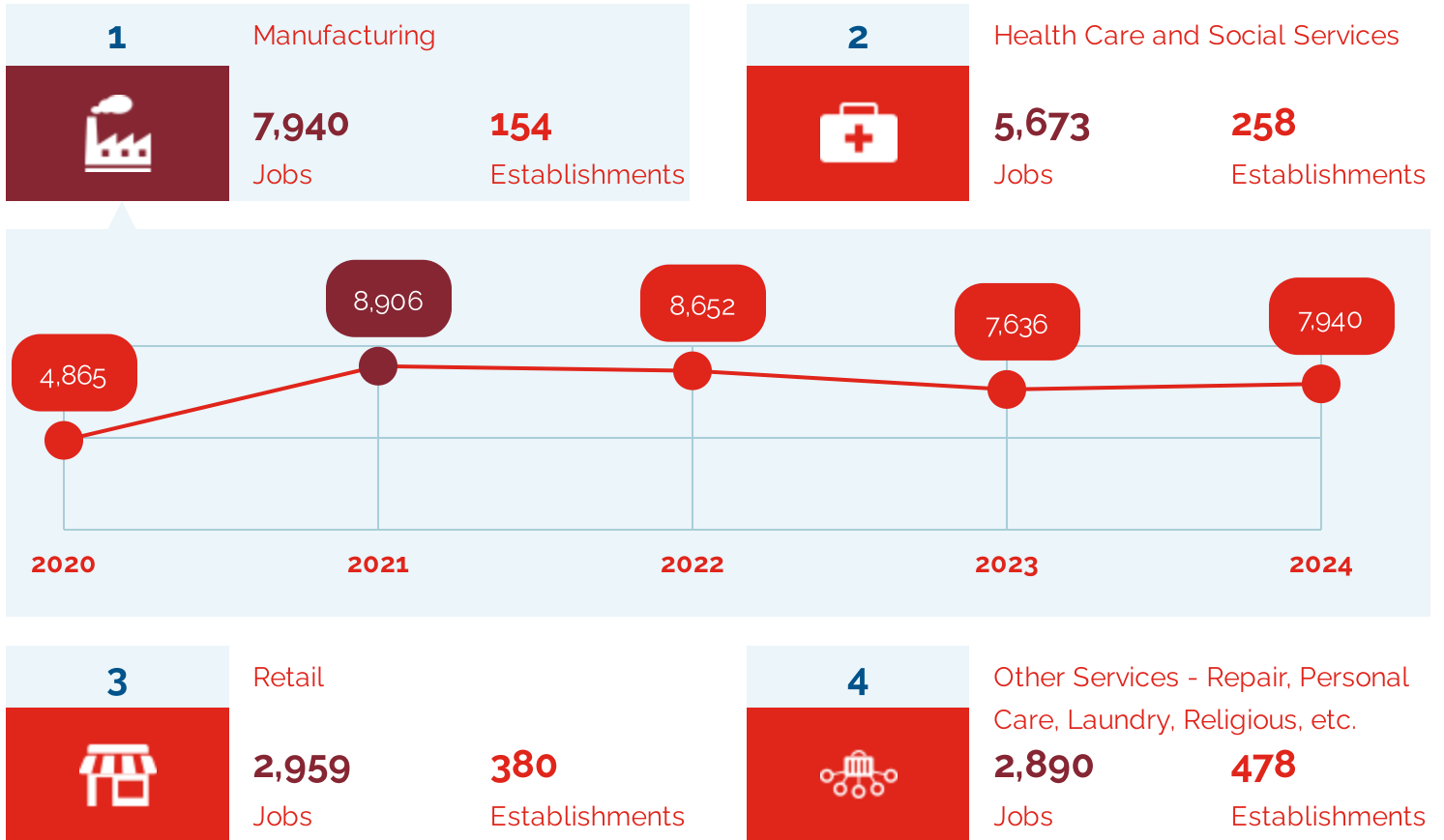
2,660



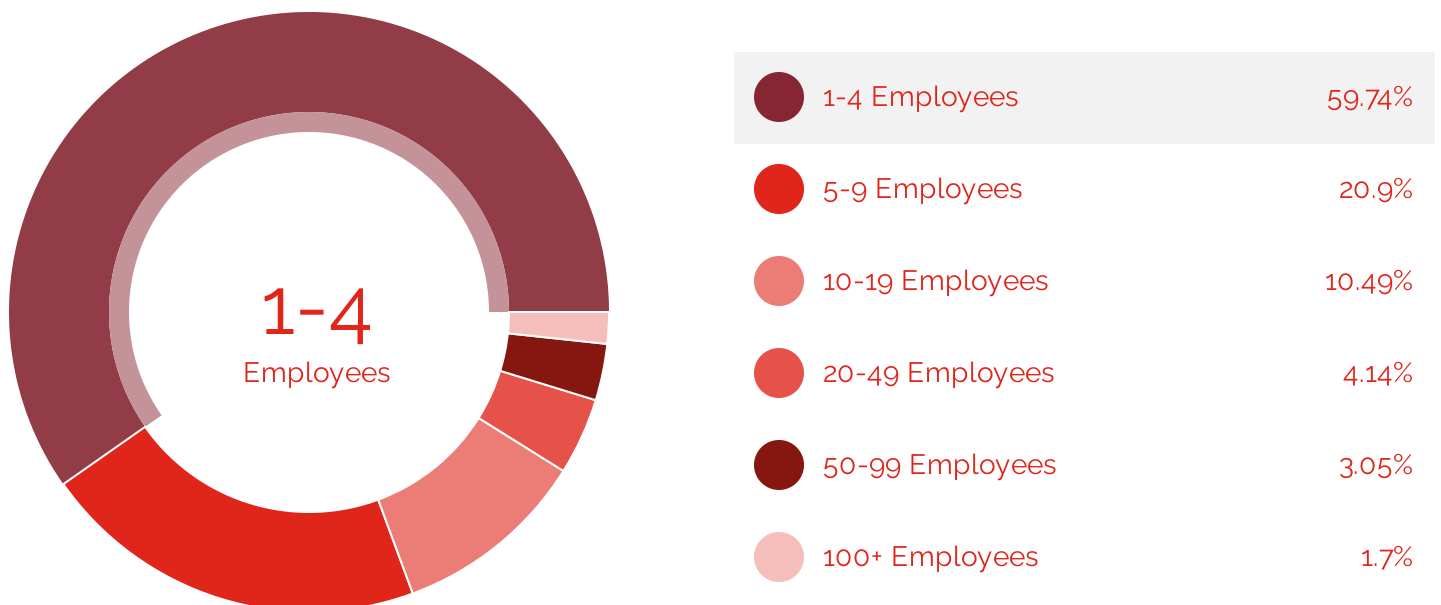
Businesses and Jobs

Ashtabula County has a total of 2,660 businesses. In 2024, the leading industries in Ashtabula County were Manufacturing, Health Care and Social Services, Retail, and Other Services - Repair, Personal Care, Laundry, Religious, etc..

What are the top industries by jobs?



How many employees do businesses in Ashtabula County have?



Income and Spending

Households in Ashtabula County earn a median yearly income of \$56,051. 22.85% of the households earn more than the national average each year. Household expenditures average \$82,692 per year. The majority of earnings get spent on Tax and Retirement (Total), Transportation (Total), Shelter (Total), Health Care (Total), and Grocery (Total).

\$56,051

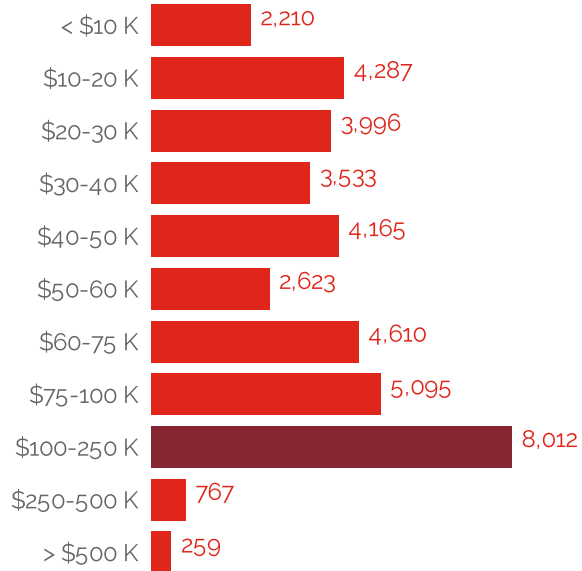
Median Household Income

0% more than the county

19% less than the state

29% less than the nation

Income Distribution



How do people spend most of their money?

PER HOUSEHOLD

Tax and Retirement (Total)



\$16,424

Transportation (Total)



\$14,044

Shelter (Total)



\$13,488

Health Care (Total)



\$6,714

Grocery (Total)



\$6,075

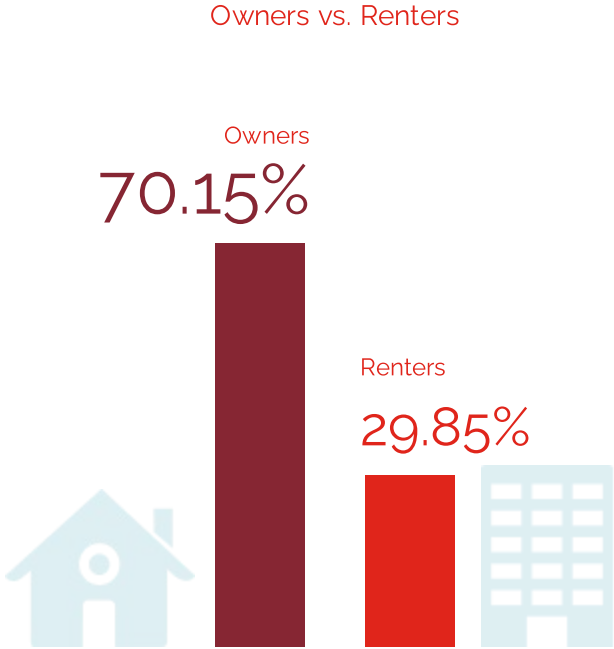


\$82,692

Average Household Expenditure

Housing

There are 40% more households who own their homes than there are renters.



Transportation

Residents spend an average of 25 minutes commuting to work. Ashtabula County is served by 37 airports within 50 miles. Rail can be accessed within the community. Interstates can be accessed within the community.



25min

Commute Travel Time



2 + 37^(+50 miles)

Airports in Community



Interstate

In Community



Freight Rail

In Community

Taxes

Top State Corporate Income Tax

0%

Top State Corporate Capital Gains Tax

0%

Top State Personal Income Tax

5.33%

Top State Personal Capital Gains Tax

5.3%

State Sales Tax

5.75%